



The Campaign for the new Barre Town Forest

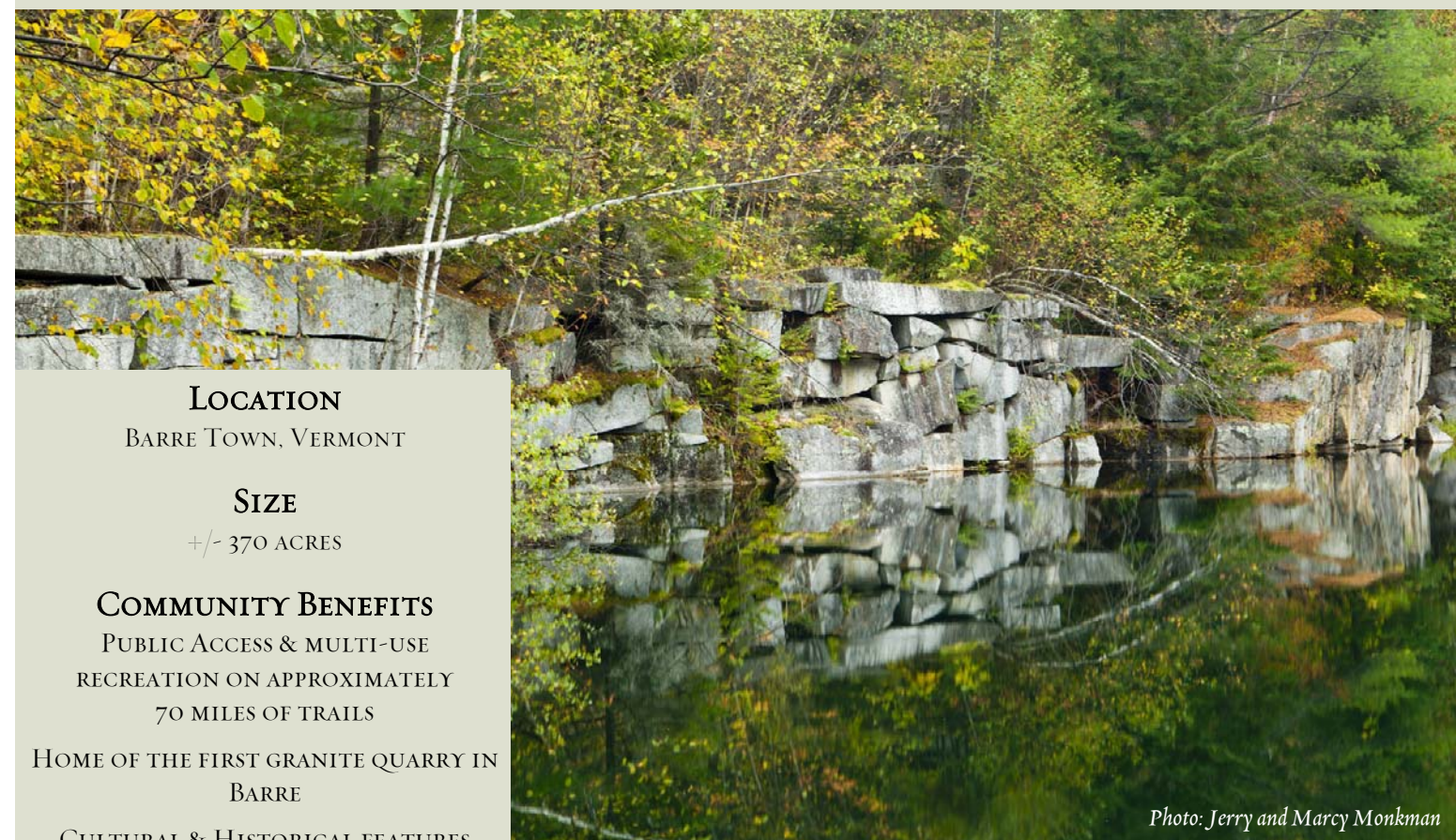


Photo: Jerry and Marcy Monkman

LOCATION

BARRE TOWN, VERMONT

SIZE

+/- 370 ACRES

COMMUNITY BENEFITS

PUBLIC ACCESS & MULTI-USE
RECREATION ON APPROXIMATELY
70 MILES OF TRAILS

HOME OF THE FIRST GRANITE QUARRY IN
BARRE

CULTURAL & HISTORICAL FEATURES
HIGHLIGHTED BY EDUCATIONAL SIGNS

WILDLIFE & NATURAL RESOURCE
PROTECTION

SUSTAINABLE TIMBER HARVESTING

SCENIC RESOURCES

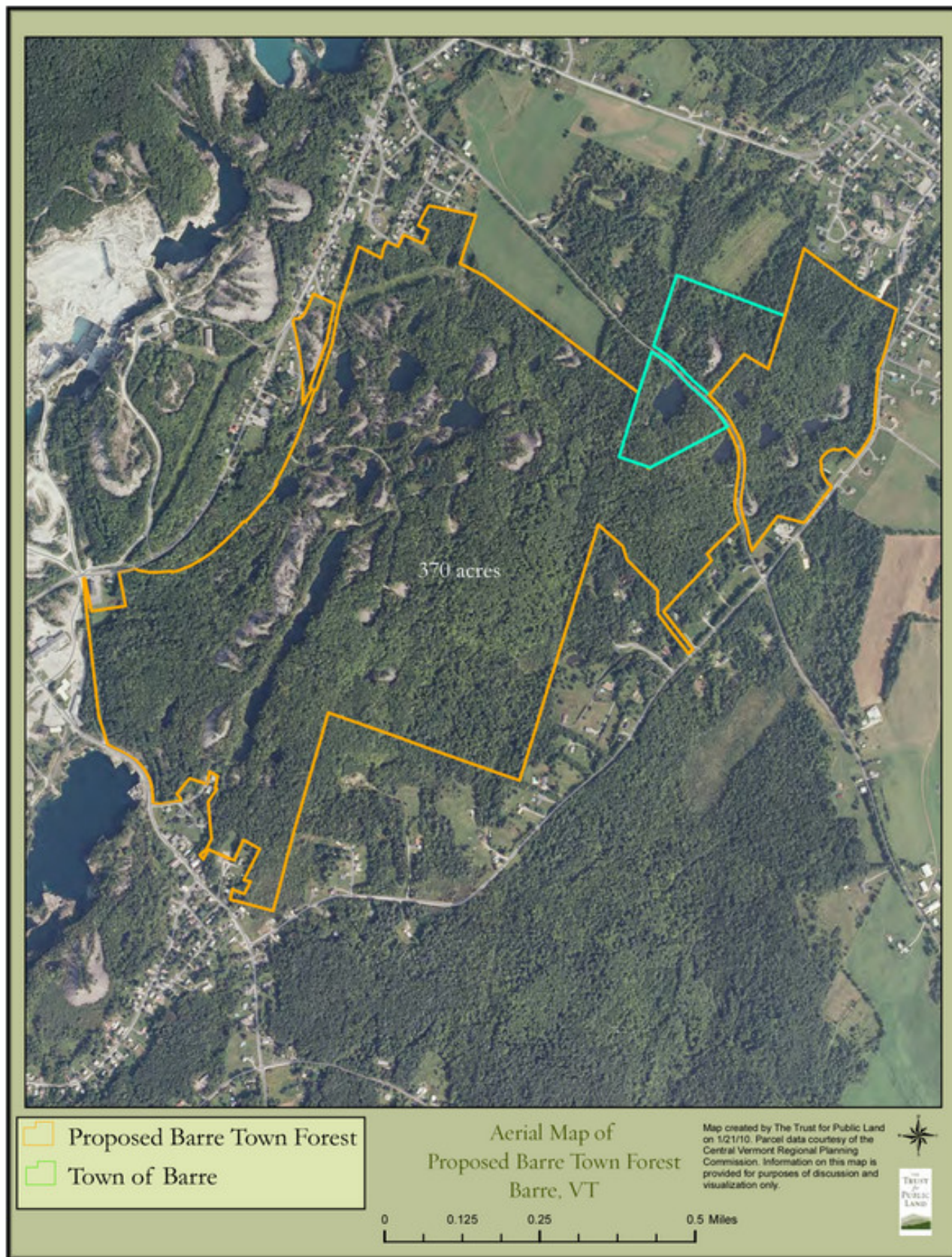
PROTECTION OF WATER QUALITY

RECREATIONAL OPPORTUNITIES
INCLUDE:

MOUNTAIN BIKING, HIKING, FISHING,
CROSS-COUNTRY SKIING, AND
SNOWMOBILING ON DESIGNATED TRAILS

PARTNERS

MILLSTONE TRAILS ASSOCIATION
THE TRUST FOR PUBLIC LAND
VERMONT LAND TRUST
VERMONT HOUSING & CONSERVATION
BOARD
BARRE AREA DEVELOPMENT, INC.
TOWN OF BARRE



FOR MORE INFORMATION, PLEASE CONTACT:

Pierre Couture
Millstone Trails Association
PO Box 44
Websterville, VT 05678
802-479-1000
Info@millstonetrails.org

Kate Wanner
The Trust for Public Land
3 Shipman Place
Montpelier, VT 05602
802-223-1373 x 27
Kate.wanner@tpl.org

THE OPPORTUNITY

The Millstone Trails Association (MTA) is working with The Trust for Public Land (TPL) and the Town of Barre to protect up to 370 acres of unique former quarry land by creating a new municipal forest for the Town of Barre. The proposed Barre Town Forest, currently owned by Rock of Ages Corporation and private owners, would provide excellent opportunities for continued forest management, tourism, recreation, wildlife habitat protection, and protection of water quality. The proposed town forest includes nearly 20 miles of trails and lies at the center of an expansive network of trails totaling approximately 70 miles in the Millstone Hill area of Barre Town. This trail network was developed and is maintained with the help of volunteers coordinated by MTA, a non-profit 501(c)(3) organization established in 2005 to expand recreation opportunities and foster public awareness and appreciation of the historic, cultural, and natural resources in the area. Home of the first granite quarry in Barre, established in 1790, the Millstone Hill area is a cultural and historical treasure for the central Vermont region.

The Campaign for the new Barre Town Forest



Photo: Jerry and Marcy Monkman



Barre granite quarry, 1920

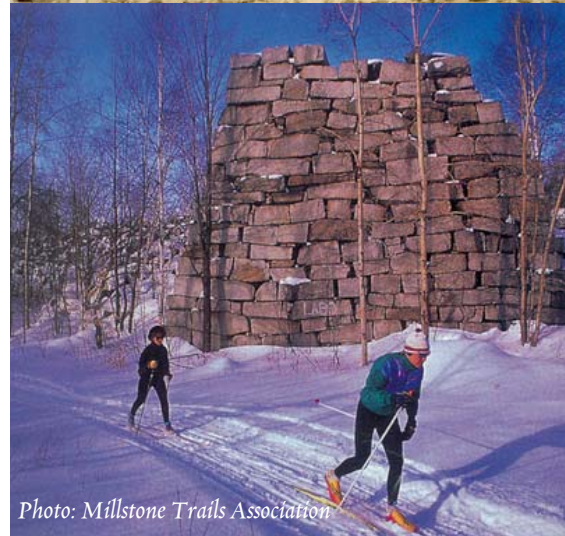


Photo: Millstone Trails Association

PROJECT BENEFITS

Connecting Communities Through Trails

Trails throughout the Millstone Hill area of Websterville and Graniteville connect people to the landscape, local history, and each other by providing a place for year-round recreation and cultural education. Ranked as one of the top 10 mountain biking destinations in New England by the Boston Globe in 2009, Millstone Hill offers local residents and visitors alike a variety of recreation options. Trails range from short, scenic hiking paths to technical mountain biking routes that take advantage of the unique terrain of the quarry site. In winter, 20 miles of trails are open for cross-country skiing and snowshoeing. Trails have been located to highlight the property's mining history, with views of quarry ponds and granite grout piles now home to mosses and lichens. The Millstone Hill trails will connect to the Central Vermont Regional Bike Path, a 14.5 mile path being built that will connect Montpelier to Barre Town.

TRADITION OF WORKING QUARRIES AND WORKING FORESTS

Over 100 years ago, Millstone Hill was the site of over 75 small independent quarry operations, fueling Barre's dramatic 19th century growth and prosperity. Virtually every square foot of Millstone Hill was cleared and quarried. During the 20th century, as quarry operations consolidated, these smaller independents closed down. Gradually the quarries filled with water and the forests returned. What was a virtual industrial wasteland was reclaimed by nature and is today a unique landscape that highlights Barre's history. The property is now heavily forested, with stands of sugar maple, mixed hardwoods, and spruce/fir. Mature hemlock stands provide important deer wintering areas on the property and filled-in quarries provide unique aquatic habitat. Under town ownership, the property would be managed to balance its wildlife habitat, recreation, educational, cultural, and timber values.

ECONOMIC DEVELOPMENT

Barre Town's economy has struggled to recover from the decline of the granite industry. Just as the Kingdom Trails have brought revenue and provided customers to support existing and new local businesses in Burke, VT, the Millstone Trails are bringing new life to a part of Vermont that has largely been passed over by Vermont's growing recreation-based tourism economy. Permanent protection of the land in Town ownership will also ensure that the land remains in active forest management, supporting local resource-based jobs and providing a stream of timber revenues to the Town.

PROJECT FUNDING

The funding needed to conserve this unique property is estimated to be \$1.3 million for the cost of the land purchase and associated expenses. The Millstone Trails Association and The Trust for Public Land will be seeking funding from federal, state, local, and private sources. MTA has committed to raising \$100,000, and has commitments of \$35,000 toward this goal.

PARTNERS

MTA is the local non-profit partner and is leading a private fundraising campaign. MTA has been successful in finding grant funds for the construction and installation of interpretive signs throughout the property to educate the community about this cultural and historical treasure in their backyards. It is proposed that MTA will continue to maintain the mountain bike and ski trails on the property and the surrounding 70-mile trail network.

TPL is managing the transactions, including contracts, appraisals, environmental assessments, title, fundraising, survey, legal, and easement negotiations.

Vermont Land Trust and Vermont Housing & Conservation Board will co-hold a conservation easement on the property, and monitor it annually.

The Town of Barre has organized a Barre Town Forest Committee, which will work with citizens, town staff, and elected officials to gather input on management and uses of the new town forest.

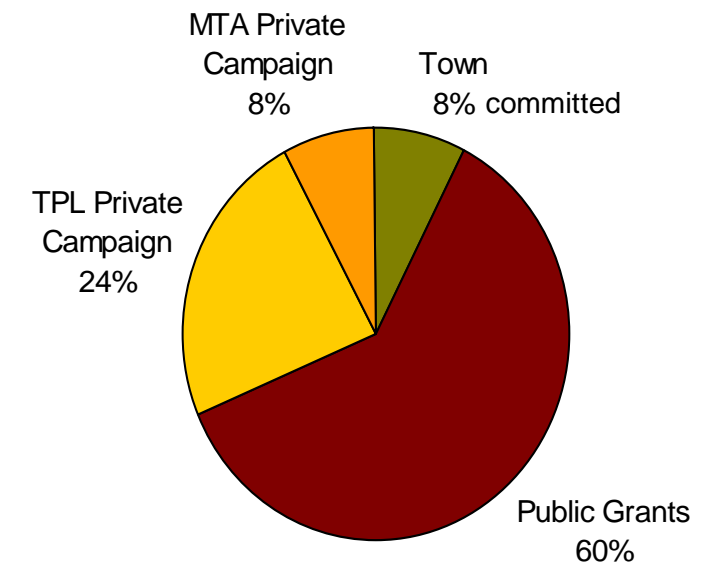


Photo: Jerry and Marcy Monkman